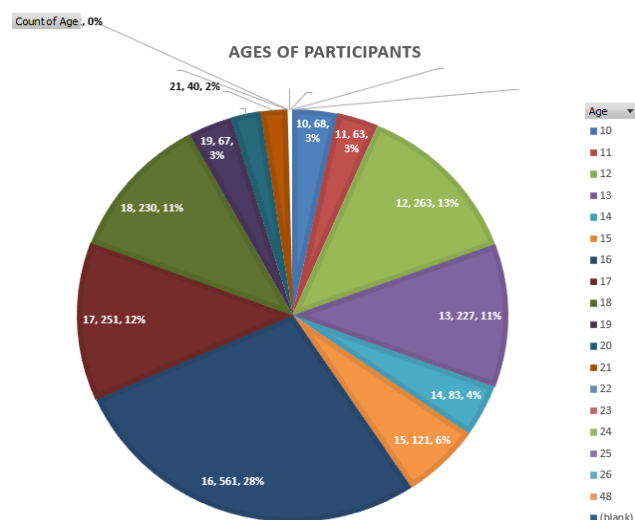
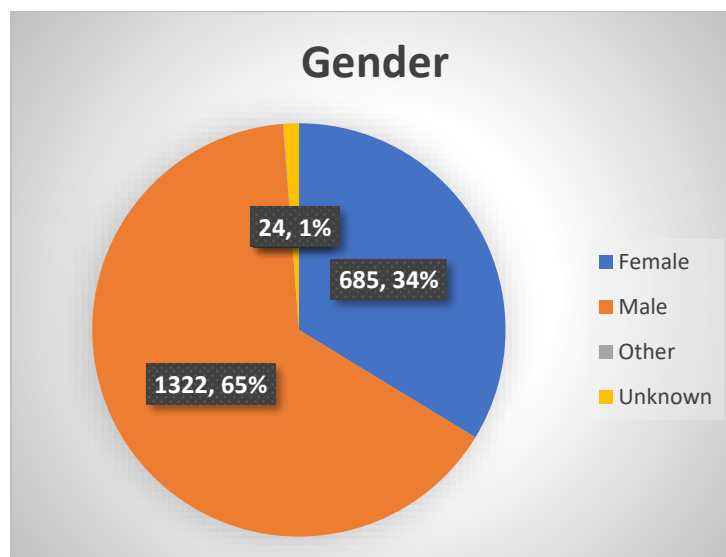


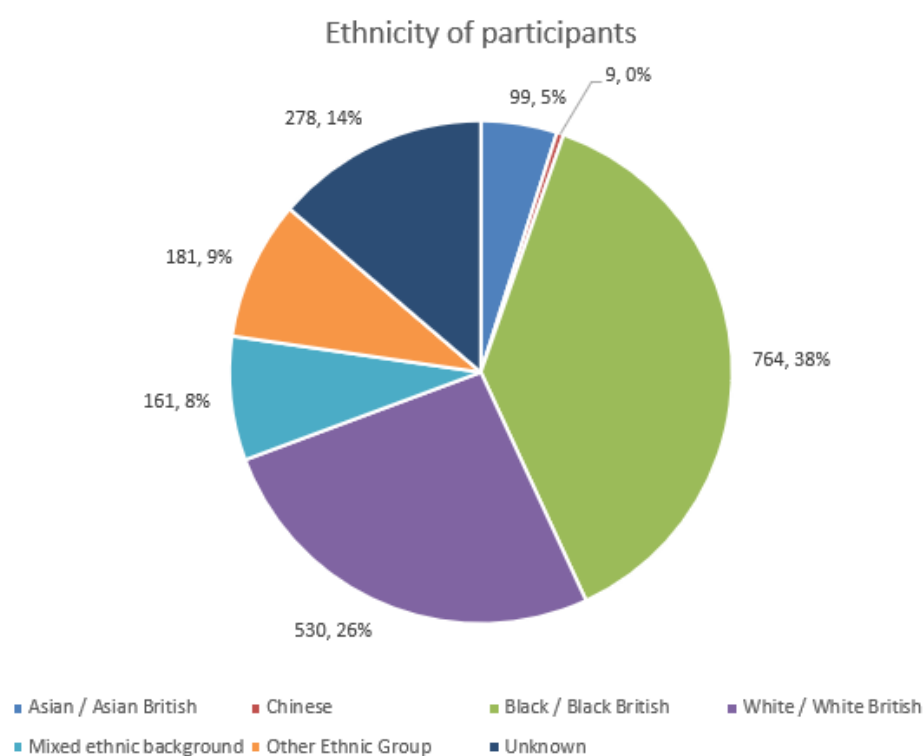
## Appendix 2 – 2020 Haringey Community Gold participants



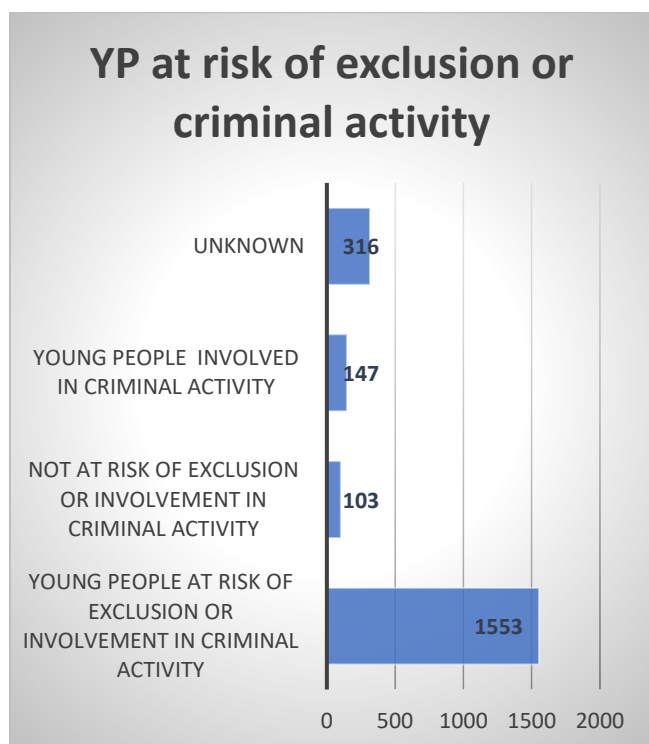
Graph 3 – shows most participants are aged 16 to 18 (1042) and 12 to 13 (490)



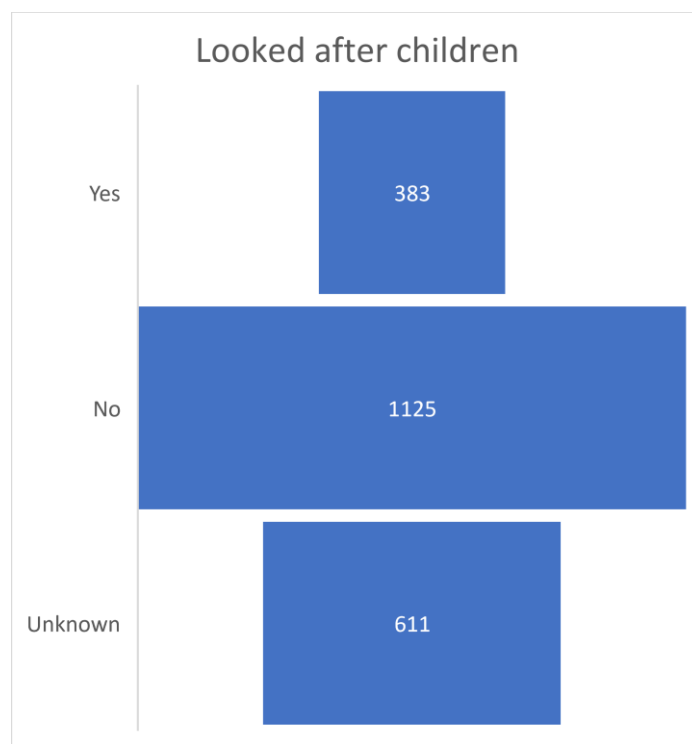
Graph 4 – demonstrates the gender of participants, 65% (1322) are male.



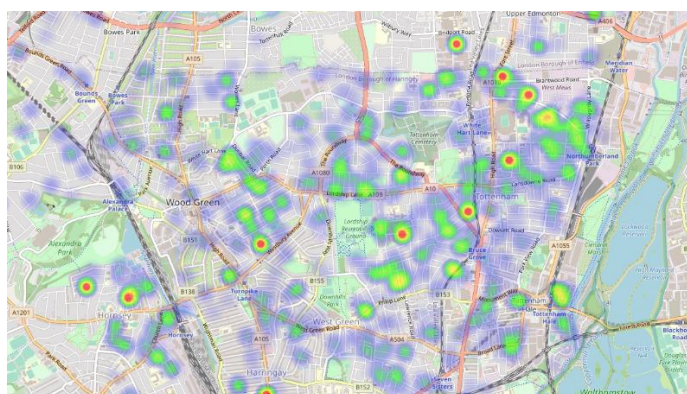
Graph 5 – the highest percentage 38% of participants are from Black / Black British (764) followed by White / White British (26%). The large number of unknowns (278) is due to those who participated in online exercises not declaring it.



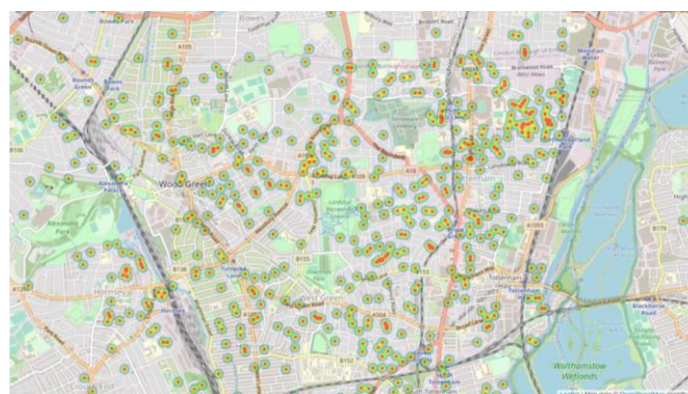
Graph 6 – Risk profile of young people engaged



Graph 7 – Number of looked after children (self-declared)



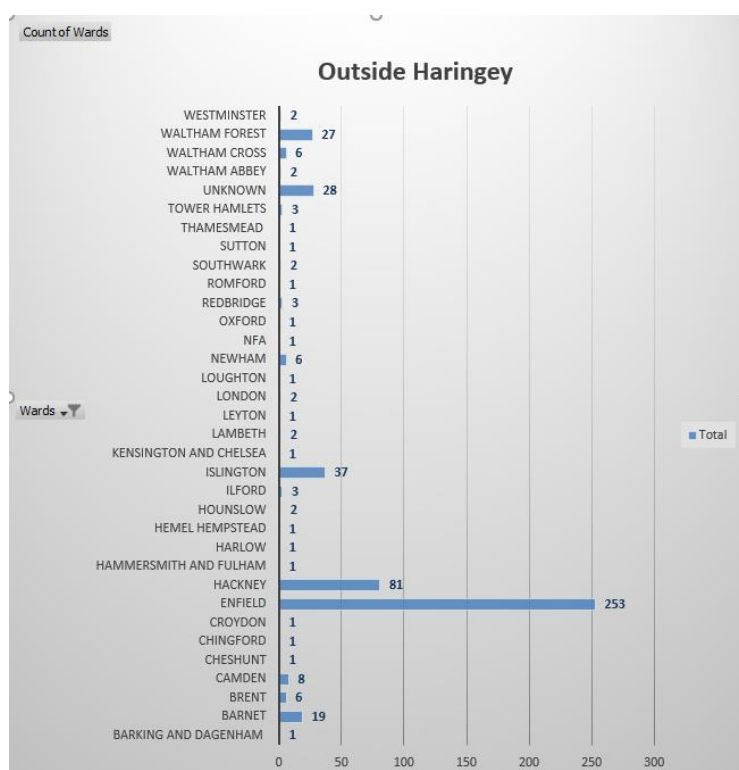
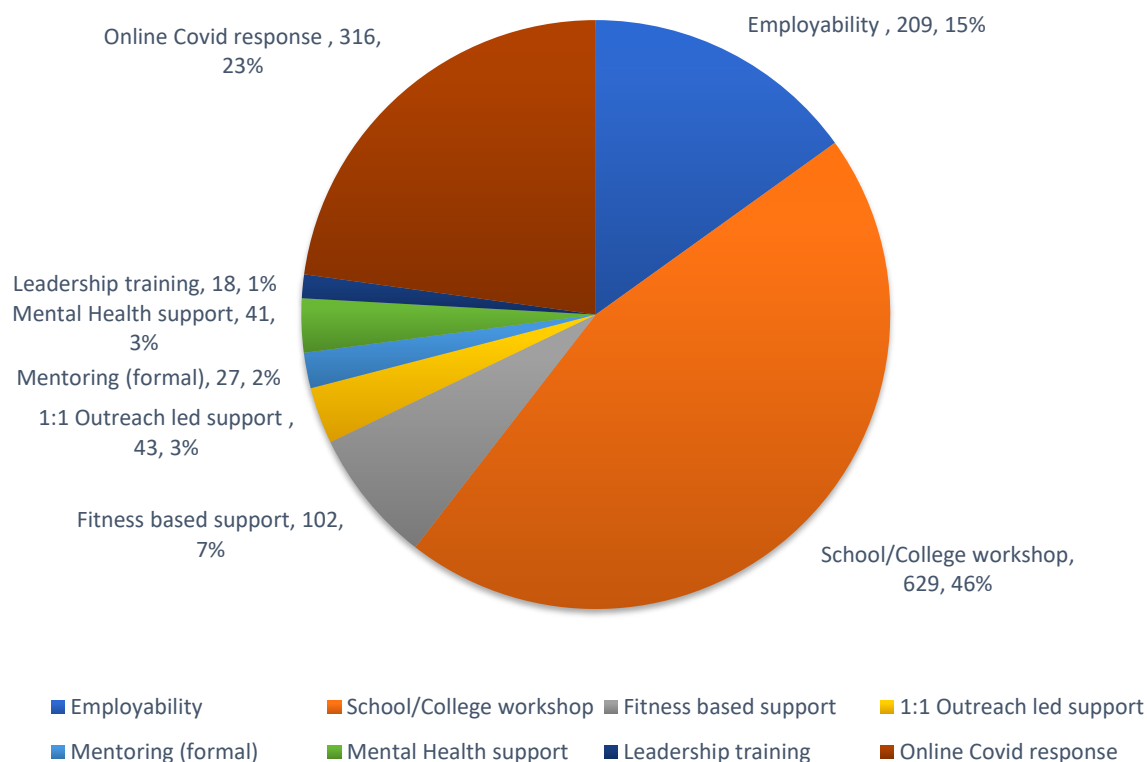
Heatmap 1 – Engagement heatmap in 2019



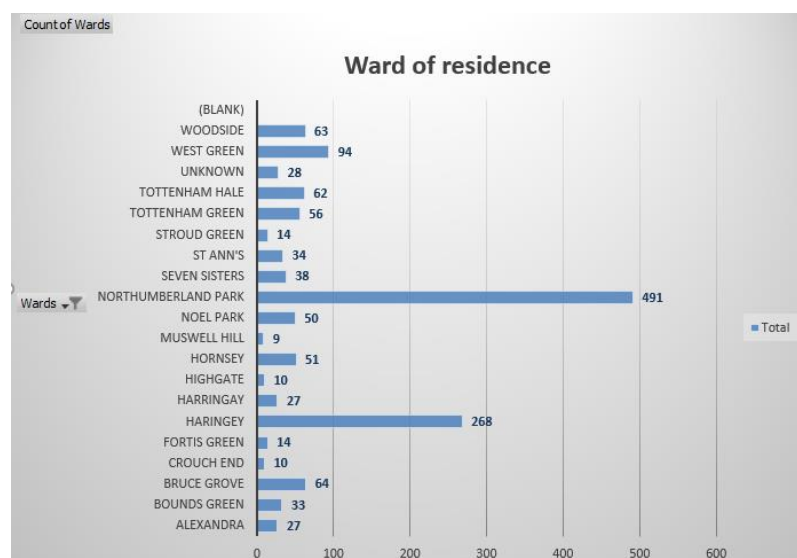
Heatmap 2 - Engagement heat map 2020

Engagement heatmaps demonstrate the shift from a north east focus in 2019 to boroughwide in 2020.

## Activities YP engaged with 2020



Graph1 - Out of those who live outside the borough the great majority (334) live in Enfield and Hackney, followed by Islington and Waltham Forrest.



Graph 2 – represents the Haringey ward participants live and shows most participants live in Northumberland Park Ward.